

INFINITY-ENGINE

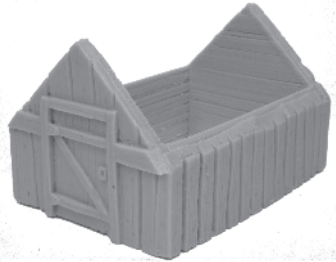
Huts and Hovels



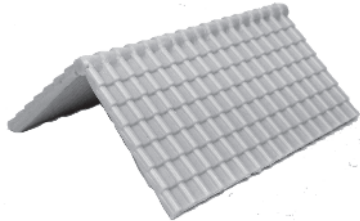
Stone Hut £4



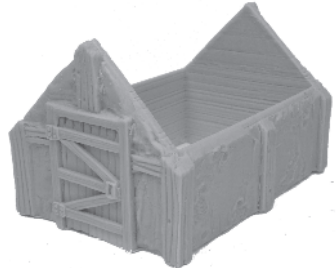
Thatched Roof £4



Wood Hut £4



Tiled Roof £4



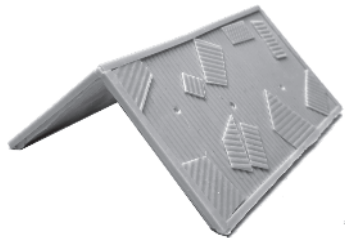
Wood and Whattle Hut £4



Shingle Roof £4



Tin Hut £4



Tin Roof £4



Stone Foundations £2

All models are sold unpainted and require assembly,

Example Huts,



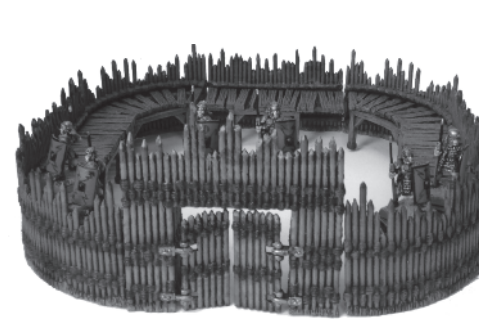
The Huts and Hovels are totally modular, each Roof fits any Hut and the Stone Foundations fits all the Huts. The huts are 65mm wide, 95mm long and 65mm high

£8 for any one roof and one hut

£10 for any roof, hut and stone foundations

INFINITY-ENGINE

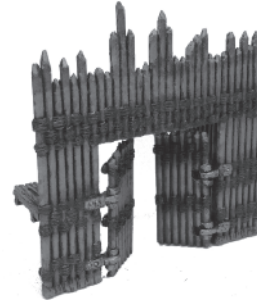
Fortress



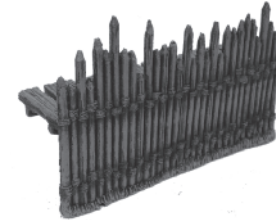
Wood Palisade £28



Earthwork Holdout £28



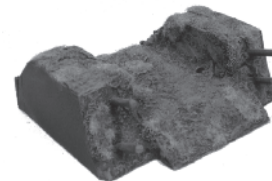
Palisade Entrance £5
90mm x 90mm



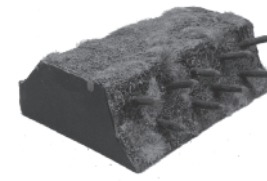
Palisade Wall £4
90mm wide



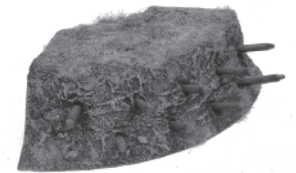
Palisade Corner £4
90mm wide



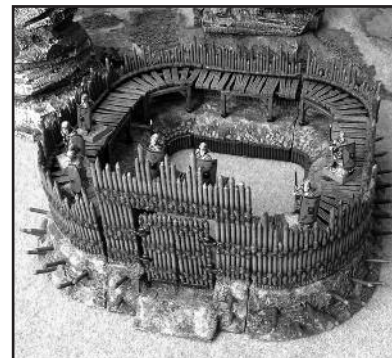
Earthwork Entrance £4
90mm wide



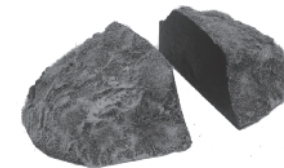
Earthwork Straight £4
90mm wide



Earthwork Corner £4
90 Degrees

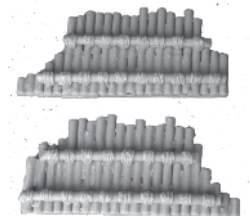


Palisade and Earthwork Fortress £50
Save £6 over both models



Earthwork End Caps pair
£4

Earthwork Buttresses pair
£1.50



Use the Earthworks in different formations, by adding the End Caps or Buttresses.

INFINITY-ENGINE

Epic Scale



Tzeench Crystal Warp Fortress £15
95mm wide 105mm long 150mm high
4 parts and clear rod



Tower of Chaos £15
110mm high
1 part



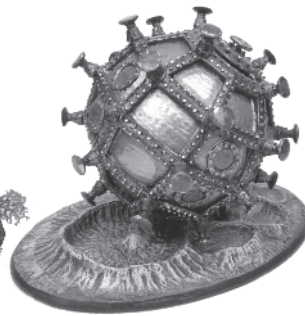
Fly Eye Palace £15
85mm wide 115mm high
10 parts

INFINITY-ENGINE

Classic Sci-Fi



Morlock Sphinx £42
160mm wide 110mm deep 150mm high
10 resin and 14 metal parts



Cavorite Sphere £30
Sphere and bumpers 100mm wide
38 parts



Iron Mole £25
Base is 135mm long
2 parts

You can purchase and see all these models in colour and many more at our website:

www.infinity-engine.co.uk

Feel free to contact us at info@infinity-engine.co.uk

Painting and assembly required

Models are copyright © Infinity-Engine 2017

Prices and models are subject to change

Get the latest news, tutorials and work in progress by liking us on facebook: [@infinityengine](https://www.facebook.com/infinityengine)

We strive to make the best possible castings, but small defects can occur, flash where the resin seeps between the mould seams and small air bubbles gets trapped in the model, these will need cleaning up and filled.

Carefully clean up the model with a craft knife, some fine sand paper can be useful to clean parts that are to be glued. We suggest super glue for resin and metal models and filling gaps and bubble holes with a little green stuff.

We would love to see your photo's of our models painted and in use in games, please send them in and the best will get freebies.

INFINITY-ENGINE

Wild Wilderness



Wild Wilderness Set OFFER £40, (Worth £54)

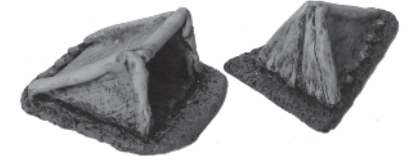
- | | |
|----------------------------|-------------------------|
| 1 x Large Tree Base | 1 x Monster Cage |
| 2 x Small Tree Bases | 1 x Human BBQ |
| 1 x Large Fungal Forest | 2 x Adventure Tents |
| 1 x Small Fungal Forest | 1 x Large Monster Trap |
| 1 x Large Arboreal Horror | 2 x Small Monster Traps |
| 2 x Small Arboreal Horrors | 1 x set of model Trees |



Large Tree Base £3.50
125mm x 80mm



Small Tree Base £2
80mm x 50mm



Adventure Tents £3.50
50mm x 37mm and 58mm x 38mm



Fungal Forest Small £4.50
60mm x 55mm x 80mm



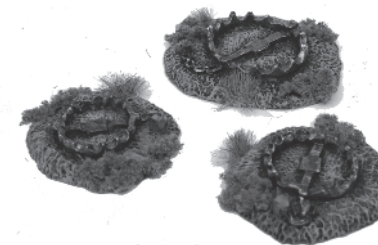
Fungal Forest Large £8.00
85mm x 75mm x 80mm



Arboreal Horror, Triffid Trio £12
45mm x 40mm and 50mm x 54mm



Monster Cage £4.50
60mm x 40mm x 50mm



Monster Traps £4.50
40mm x 35mm



Camp Fire with Human BBQ £4.50
55mm x 40mm